

Nervous and
Endocrine
Pathology

Nervous System Pathology

(Werner Page 146)

Chronic Degenerative Disorders

- **Alzheimer disease**
- **Amyotrophic lateral sclerosis**
- **Huntington disease**
- **Peripheral neuropathy**

Movement Disorders

- **Dystonia**
- **Spasmodic torticollis**
- **Parkinson disease**
- **Tremor**

Nervous System Pathology

(Werner Page 146)

Infectious Disorders

- Encephalitis
- Herpes zoster
- Meningitis
- Polio
- Postpolio syndrome

Psychiatric Disorders

- Addiction
- Anxiety disorders
- Attention deficit
hyperactivity disorder
- Autism spectrum disorder
- Depression
- Eating disorders

Nervous System Pathology

(Werner Page 146)

Nervous System Disorders

- **Bell palsy**
- **Complex regional pain syndrome**
- **Spinal cord injury**
- **Stroke**
- **Traumatic brain injury**
- **Trigeminal neuralgia**

Nervous System Birth Defects

- **Spina bifida**
- **Cerebral Palsy**

Nervous and Endocrine System Pathology

(Werner Page 146 and 404)

Other Nervous System Conditions

- **Fibromyalgia**
- **Headaches**
- **Meneire disease**
- **Epilepsy**
- **Sleep disorders**
- **Vestibular balance disorder**

Endocrine System Disorders

- **Diabetes**
- **Hyperthyroidism**
- **Hypothyroidism**
- **Metabolic syndrome**
- **Thyroid cancer**

Nervous System Pathology

Peripheral neuropathy Damage to peripheral nerves. Often the result of other underlying conditions, pathogens or toxic substances.

Nervous System Pathology

Spasmodic torticollis (AKA: cervical dystonia) Most common form of dystonia. Involves unilateral contractions of neck rotators, usually sternocleidomastoid.

Nervous System Pathology

Postpolio syndrome Group of symptoms suffered by survivors of polio.
Progressive muscular weakness.

Nervous System Pathology

Depression Group of mood disorders that can result in persistent feelings of sadness, guilt, and/or hopelessness.

Nervous System Pathology

Spinal cord injury Damage to some or all of the spinal cord fibers. Caused by trauma, tumors, or bony growths.

Nervous System Pathology

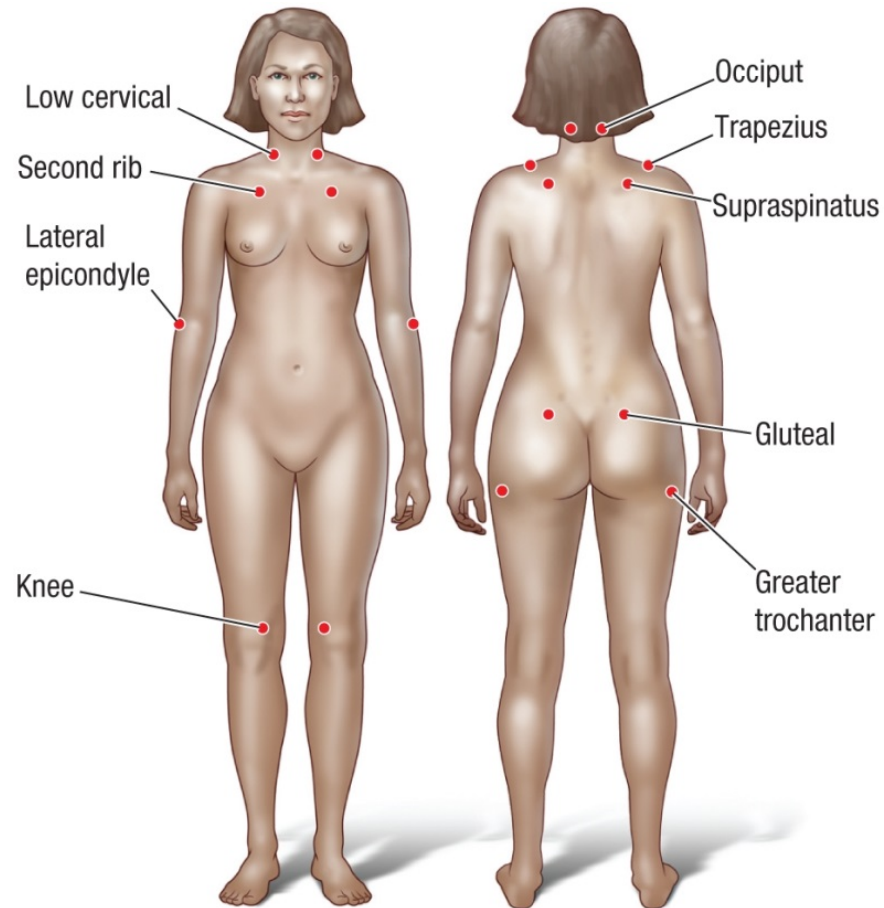
Stroke (AKA: cerebrovascular accident, or brain attack) Damage to brain tissue. Caused by blockage in blood flow or by an internal hemorrhage.

Nervous System Pathology

Fibromyalgia Chronic pain syndrome. Neuroendocrine disruption, sleep disorders, predictable patterns of tender points in muscles and other soft tissues.

Nervous System Pathology

Fibromyalgia

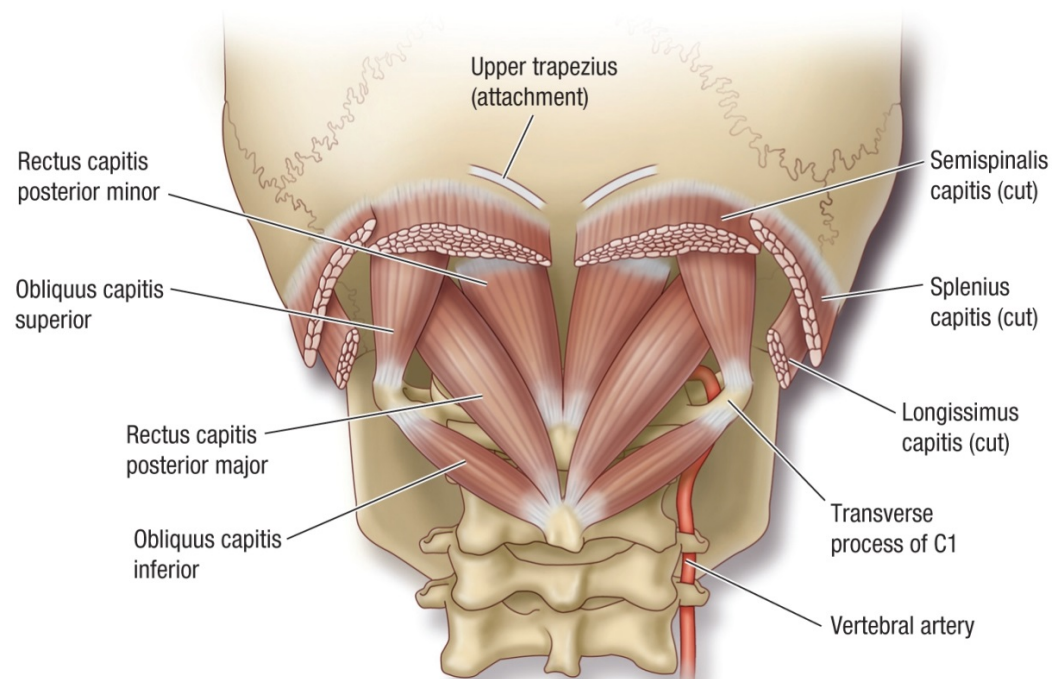


Nervous System Pathology

Headaches One of the most common physical problems in the range of human experience. Pain caused by muscular tension, nerve irritation, vascular spasm and dilation, and chemical imbalances.

Nervous System Pathology

Headaches



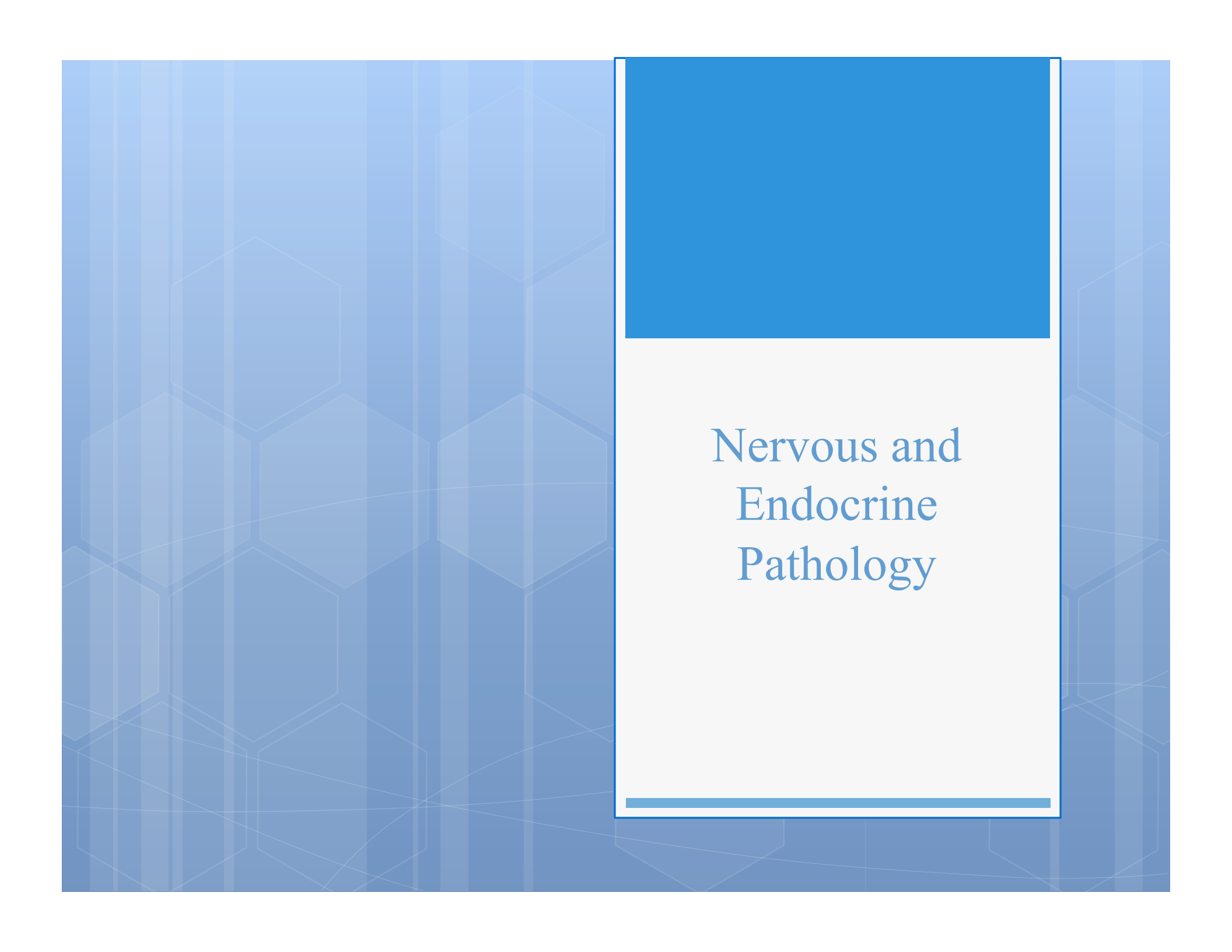
Nervous System Pathology

Sleep disorders Collection of problems that make it difficult to get enough sleep or to wake up feeling rested and refreshed. Includes insomnia, sleep apnea, restless leg syndrome, narcolepsy, circadian rhythm disruption.

Endocrine System Pathology

Type 1 diabetes mellitus Autoimmune disorder resulting in hyperglycemia. Insulin deficiency due to destruction of insulin-producing beta cells in the pancreas. Caused by exposure to certain drugs or chemicals, or complications with certain types of infections.

Type 2 diabetes mellitus Disorder resulting in hyperglycemia. Caused by pro-diabetes behavior and genetic predisposition. Can be controlled diet, exercise, and medication.



Nervous and
Endocrine
Pathology